

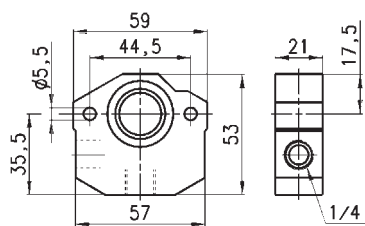
Accessories for FRL Series C, MC, M and N

Mounting bracket
Fixing flange
Screws for assembling
Take-off block
Pressure gauges, dia. 43, 53, 63 mm



Take-off block, Series C

Take-off block (for C238 and C202)
(complete with 2 screws, Mod. C2-VB and 1 OR 132).

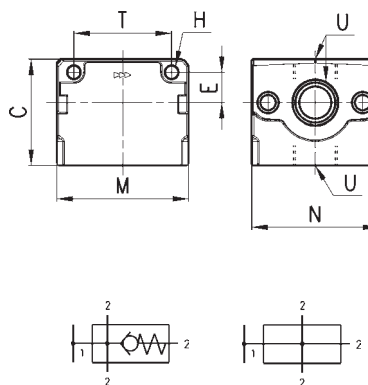


Mod.

C2-B

Take-off block, Series MC

If mounted as last element,
it should be mounted with terminal flanges.

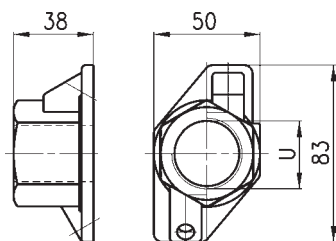


DIMENSIONS

Mod.	C	H	E	M	N	T	U
MC1-B	43	4	11	45	45	35	1/4
MC1-B-VNR	43	4	11	45	45	35	1/4

Fixing flange, Series C

Fixing flange F-L-R-D (for C401)
(complete with 4 screws and 2 OR 3150).



Mod.

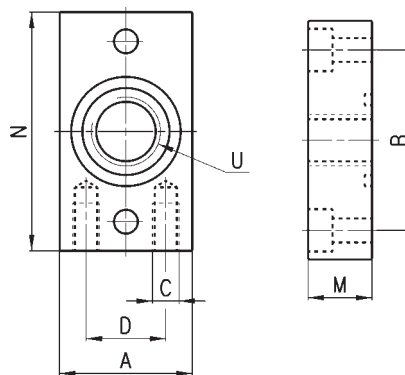
U

C434-FL G3/4 G3/4 (right and left)

C401-FL G1 G1 (right and left)

Terminal flanges Series MC (kit A)

Terminal flanges left right
(complete with 4 screws and 2 O-Ring).

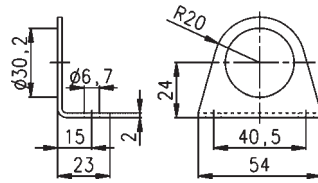


DIMENSIONS

Mod.	A	B	C	D	N	M	U
MC104-FL	25	34	M5	15	45	12	1/4

Mounting bracket, Series C - N - M

Mounting bracket R-D
(G1/4 - G1/8)

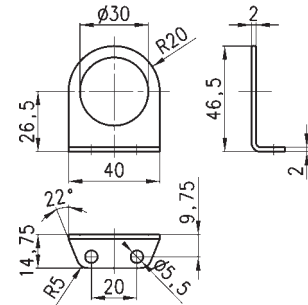


Mod.

C114-ST

Mounting bracket Series MC - M - N

Mounting bracket R-D
(G1/4 - G1/8)

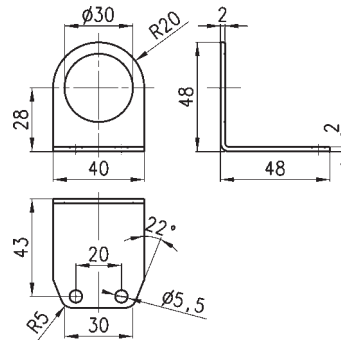


Mod.

C114-ST/1

Mounting bracket, Series MC - M - N

Mounting bracket R-D
(G1/4 - G1/8)

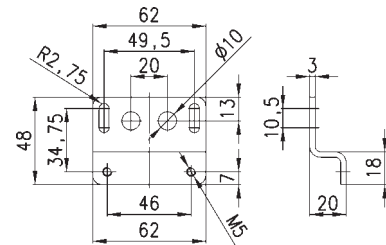


Mod.

C114-ST/2

Mounting bracket, Series Series C

Mounting bracket R-D
(for C238 e C202)
complete with N° 2
screws

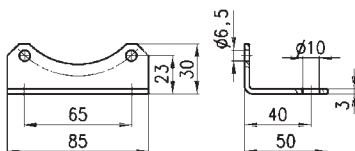


Mod.

C238-ST/1

Mounting bracket, Series C

Mounting bracket R-D
(for C401)
complete with N° 2 screws

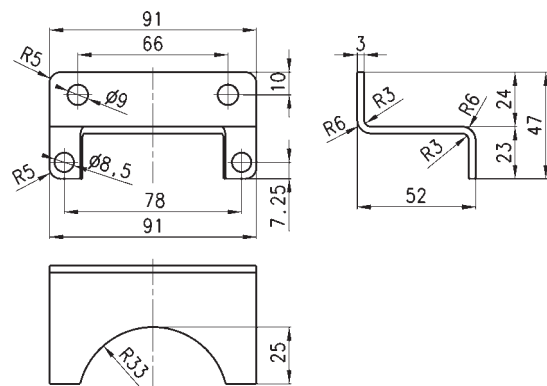


Mod.

C401-ST

Mounting bracket, Series C

Mounting bracket R-F
(for C401)
complete with N° 2 screws

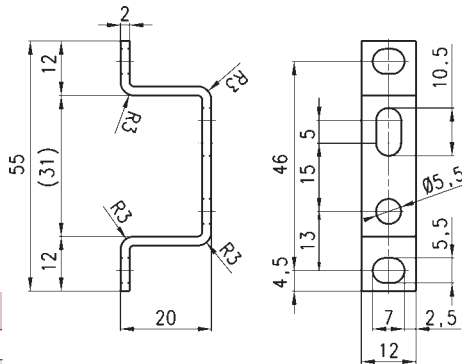


Mod.

C401-ST/2

Mounting bracket Series MC (kit B)

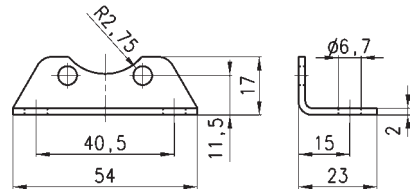
2 Mounting bracket
complete with 4 screws M5



Mod.
MC104-ST

Mounting bracket Series Serie N

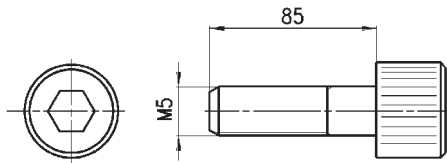
Mounting bracket (for N204 F-L)
(complete with 2 screws).



Mod.
N204-ST

Screw for assembling, Series C

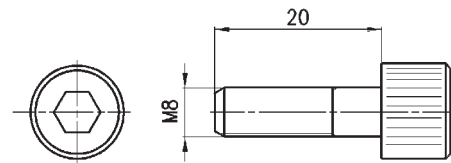
Screw for assembling F+B+R (C238 and C202)
(spare part only)



Mod.
C2-VB

Screw for assembling, Series C

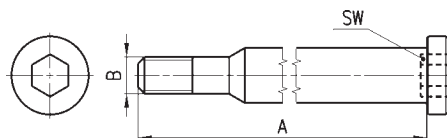
Screw for assembling F-L-R-D (for C401)
(complete with 2 screws and 1 OR 3150)
(spare part only)



Mod.
C4-V

Screw for assembling, Series MC (kit E)

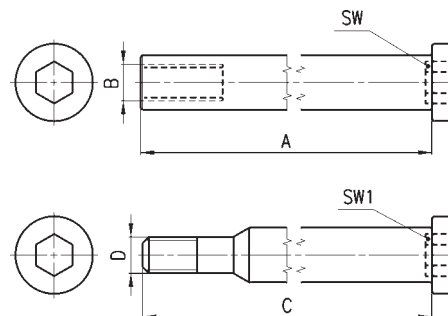
(complete with 2 screws and 1 O-Ring)



Mod.	A	B	SW
MC1-VM	42,5	M4	4

Screw for assembling, Series MC (kit F)

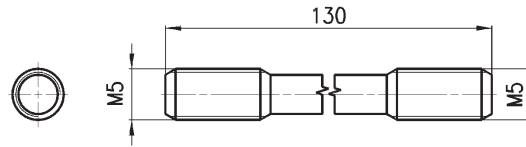
(complete with 2 male screws, 2 female screws
and 1 O-Ring)



Mod.	A	B	C	D	SW	SW1
MC1-VMF	42	M4	42,5	M4	4	4

Tie-rod for assembling, Series C

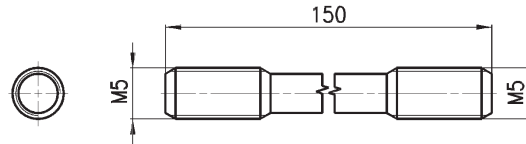
Tie-rod for assembling F+L (C238 and C202)
(complete with 2 screws and 1 OR 132).



Mod.

C2-VL**Tie-rod for assembling, Series C**

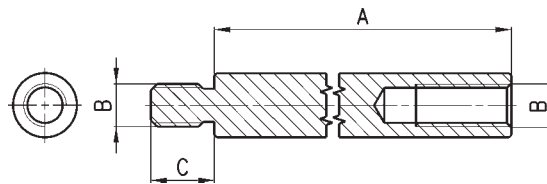
Tie-rod for assembling F+B+L (C238 and C202)
(complete with 2 screws and 1 OR 132).



Mod.

C2-VBL**Tie-rod for assembling, Series MC (kit C)**

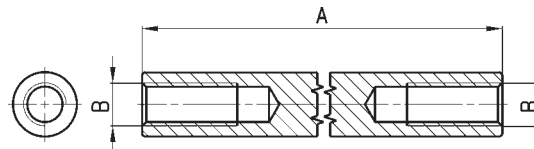
Male - female tie-rods
(complete with 2 tie-rods and 1 O-Ring)



Mod.	A	B	SW
MC1-TMF	45	M4	6

Tie-rod for assembling, Series MC (kit D)

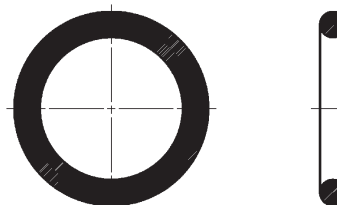
female tie-rods
N° 2 tie-rods



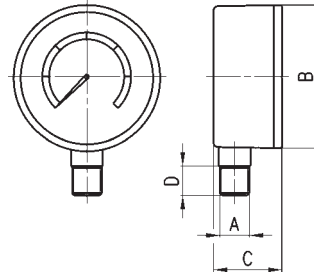
Mod.	A	B
MC1-TFF	44	M4

Assembly O-ring, Series C - MC

Assembly O-ring F-L-R-D
for C238-C202 mod. **C238-R37** (OR 132)
and C401 mod. **C401-F33** (OR 3150)
for MC104 mod. **458-33/1** (OR 2068)
(spare part only).



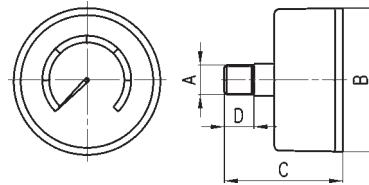
Pressure gauges, Mod. M... -R12



DIMENSIONS

Mod.	A	B	C	D
M043-R12	R1/8	39,5	24	10
M053-R12	R1/8	51	27,5	10
M063-R12	R1/4	63	28,5	13

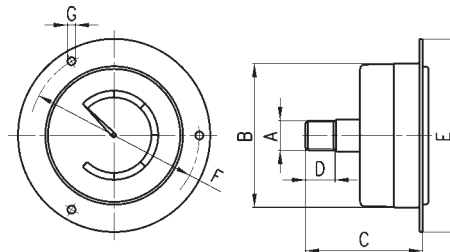
Pressure gauges, Mod. M... -P12



DIMENSIONS

Mod.	A	B	C	D
M043-P12	R1/8	39,5	40	10
M053-P12	R1/8	51	46	10
M063-P12	R1/4	62,5	50	13

Pressure gauges, Mod. M... -F12



DIMENSIONS

Mod.	A	B	C	D	E	F	G
M043-F12	R1/8	40	40	10	61	51	3,5
M063-F12	R1/4	63	51	13	85	75	3,5