

## Universal fittings

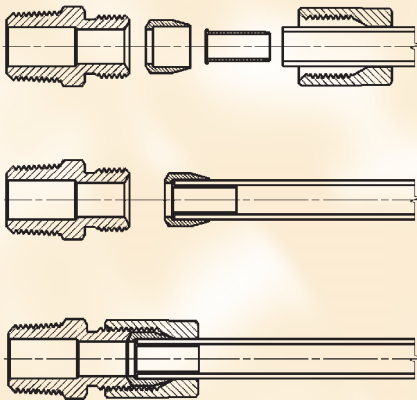
Tube  $\varnothing$ 4, 6, 8, 10, 12 mm

Connections G1/8, G1/4

R1/8, R1/4, R3/8, R1/2



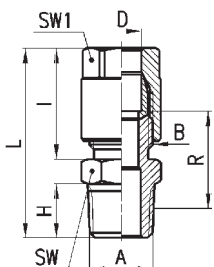
### Universal fittings



### TECHNICAL DATA

Material	brass OT58, nickel-plated
Threads	GAS, conical ISO 7 (BSPT) GAS, cylindrical ISO 228 (BSP)
Pressure	refer to operating pressure of tubes, max pressure 40 bar
Connecting tube	annealed copper and plastic tubes (with reinforcement)
Diameters	4 ÷ 12 mm
Fluid	compressed air and other low pressure fluids
Temperature	(see data for tubing used)

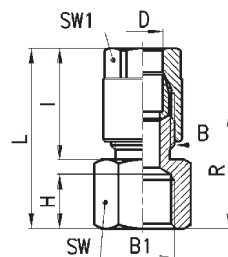
**Fittings Mod. 1050..**



**DIMENSIONS**

Mod.	D	A	B	H	I	L	R	SW	SW1
<b>1050 4 -1/8</b>	4	R1/8	1/8	7,5	19	31	16,5	12	12
<b>1050 6 -1/8</b>	6	R1/8	1/8	7,5	19	31	17	12	12
<b>1050 6 -1/4</b>	6	R1/4	1/8	11	19	35	19,5	14	12
<b>1050 8 -1/8</b>	8	R1/8	1/4	7,5	23	35	18,5	14	14
<b>1050 8 -1/4</b>	8	R1/4	1/4	11	23	39	21	14	14
<b>1050 8 -3/8</b>	8	R3/8	1/4	11,5	23	39,5	21	17	14
<b>1050 10-1/4</b>	10	R1/4	3/8	11	25,5	41,5	21	17	17
<b>1050 10-3/8</b>	10	R3/8	3/8	11,5	25,5	42	21	17	17
<b>1050 10-1/2</b>	10	R1/2	3/8	14	25,5	45	22,5	22	17
<b>1050 12-1/4</b>	12	R1/4	1/2	11	29,5	45,5	23,5	22	19
<b>1050 12-3/8</b>	12	R3/8	1/2	11,5	29,5	46	23,5	22	19
<b>1050 12-1/2</b>	12	R1/2	1/2	14	29,5	49	25	22	19

**Fittings Mod. 1063...**



**DIMENSIONS**

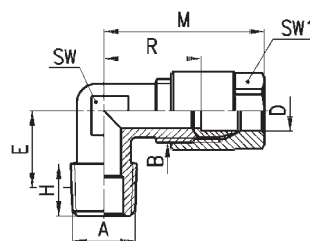
Mod.	D	B1	B	H	I	L	R	SW	SW1
<b>1063 4 -1/8</b>	4	G1/8	1/8	7,5	19	29	18,5	14	12
<b>1063 6 -1/8</b>	6	G1/8	1/8	7,5	19	29	18,5	14	12
<b>1063 6 -1/4</b>	6	G1/4	1/8	11	19	33	22,5	17	12
<b>1063 8 -1/8</b>	8	G1/8	1/4	7,5	23	33	20	14	14
<b>1063 8 -1/4</b>	8	G1/4	1/4	11	23	37	24	17	14

**Fittings Mod. 1020...**

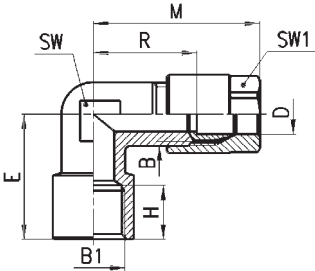


**DIMENSIONS**

Mod.	D	A	B	E	H	M	R	SW	SW1
<b>1020 4 -1/8</b>	4	R1/8	1/8	15	7,5	29,5	19	9	12
<b>1020 6 -1/8</b>	6	R1/8	1/8	15	7,5	29,5	19	9	12
<b>1020 6 -1/4</b>	6	R1/4	1/8	16,5	11	29,5	19	12	12
<b>1020 8 -1/8</b>	8	R1/8	1/4	15	7,5	33	20	12	14
<b>1020 8 -1/4</b>	8	R1/4	1/4	16,5	11	33	20	12	14
<b>1020 8 -3/8</b>	8	R3/8	1/4	19,5	11,5	35	22	14	14
<b>1020 10-1/4</b>	10	R1/4	3/8	19	11	38	22,5	14	17
<b>1020 10-3/8</b>	10	R3/8	3/8	19,5	11,5	38	22,5	14	17
<b>1020 10-1/2</b>	10	R1/2	3/8	21	14	38	22,5	16	17
<b>1020 12-1/4</b>	12	R1/4	1/2	19	11	42	25	16	19
<b>1020 12-3/8</b>	12	R3/8	1/2	19,5	11,5	42	25	16	19
<b>1020 12-1/2</b>	12	R1/2	1/2	21	14	42	25	16	19



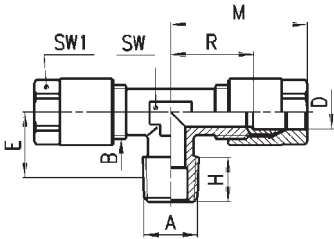
Fittings Mod. 1093...



DIMENSIONS

Mod.	D	B1	B	E	H	M	R	SW	SW1
<b>1093 4 - 1/8</b>	4	G1/8	1/8	21	7,5	29,5	18,5	12	12
<b>1093 6 - 1/8</b>	6	G1/8	1/8	21	7,5	29,5	19	12	12
<b>1093 6 - 1/4</b>	6	G1/4	1/8	25,5	11	30,5	20	14	12
<b>1093 8 - 1/8</b>	8	G1/8	1/4	21	7,5	33	20	12	14
<b>1093 8 - 1/4</b>	8	G1/4	1/4	25,5	11	35	22	14	14

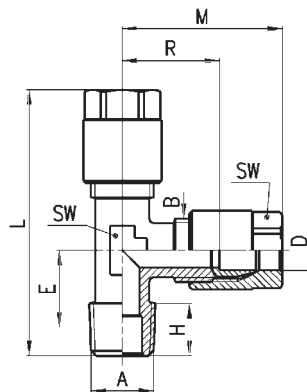
Fittings Mod. 1000...



DIMENSIONS

Mod.	D	A	B	E	H	M	R	SW	SW1
<b>1000 4 - 1/8</b>	4	R1/8	1/8	15	7,5	29,5	19	9	12
<b>1000 6 - 1/8</b>	6	R1/8	1/8	15	7,5	29,5	19	9	12
<b>1000 8 - 1/4</b>	8	R1/4	1/4	16,5	11	33	20	12	14
<b>1000 10 - 1/4</b>	10	R1/4	3/8	19	11	38	22,5	14	17

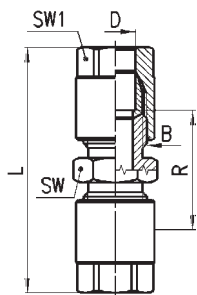
Fittings Mod. 1010...



DIMENSIONS

Mod.	D	A	B	E	H	L	M	R	SW	SW1
<b>1010 4 - 1/8</b>	4	R1/8	1/8	15	7,5	48	29,5	19	9	12
<b>1010 6 - 1/8</b>	6	R1/8	1/8	15	7,5	48	29,5	19	9	12
<b>1010 8 - 1/4</b>	8	R1/4	1/4	16,5	11	54,5	33	20	12	14
<b>1010 10 - 1/4</b>	10	R1/4	3/8	19	11	62	38	22,5	14	17

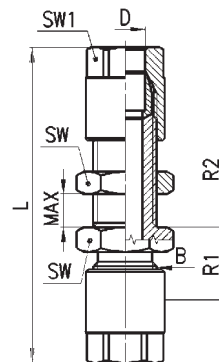
Fittings Mod. 1230...



DIMENSIONS

Mod.	D	B	L	R	SW	SW1
<b>1230 4</b>	4	1/8	42,5	21,5	12	12
<b>1230 6</b>	6	1/8	42,5	21,5	12	12
<b>1230 8</b>	8	1/4	51	25	14	14
<b>1230 10</b>	10	3/8	56	25	17	17
<b>1230 12</b>	12	1/2	64,5	30,5	22	19

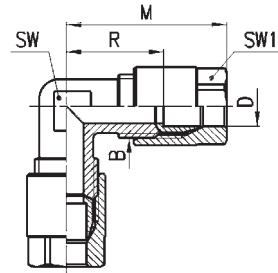
Fittings Mod. 1250...



DIMENSIONS

Mod.	D	B	L	R1	R2	MAX	SW	SW1
<b>1250 4</b>	4	1/8	57,5	12,5	23	12	14	12
<b>1250 6</b>	6	1/8	57,5	13	23,5	12	14	12
<b>1250 8</b>	8	1/4	65	15	24	13	17	14
<b>1250 10</b>	10	3/8	72,5	15	26,5	13	22	17

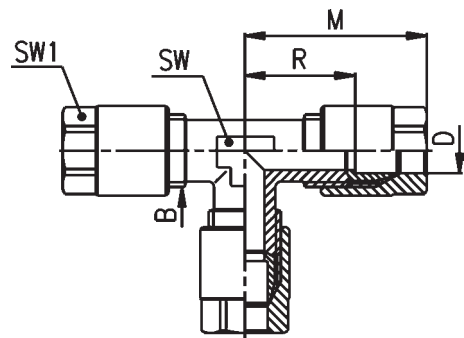
Fittings Mod. 1220...



DIMENSIONS

Mod.	D	B	M	R	SW	SW1
<b>1220 4</b>	4	1/8	29,5	19	9	12
<b>1220 6</b>	6	1/8	29,5	19	9	12
<b>1220 8</b>	8	1/4	33	20	12	14
<b>1220 10</b>	10	3/8	38	22,5	14	17
<b>1220 12</b>	12	1/2	42	25	16	19

Fittings Mod. 1210...

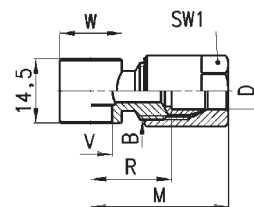


DIMENSIONS

Mod.	D	B	M	R	SW	SW1
<b>1210 4</b>	4	1/8	29,5	19	9	12
<b>1210 6</b>	6	1/8	29,5	19	9	12
<b>1210 8</b>	8	1/4	33	20	12	14
<b>1210 10</b>	10	3/8	38	22,5	14	17
<b>1210 12</b>	12	1/2	42	25	16	19

**Fittings Mod. 1170...**

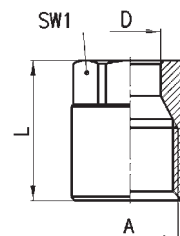
\* Assembly required with Mod. 1635.



**DIMENSIONS**

Mod.	D	B	R	M	V	W	SW1
<b>1170 6 - 1/8</b>	6	1/8	17,5	28	9,8	Ø14	12
<b>1170 6 - 1/4</b>	6	1/8	20	30,5	13,2	Ø18	12
<b>1170 8 - 1/8</b>	8	1/4	18	31	9,8	Ø14	14 *

**Fittings Mod. 1303...**

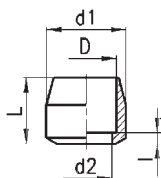


**DIMENSIONS**

Mod.	D	A	L	SW1
<b>1303 4 - 1/8</b>	4	1/8	15,5	12
<b>1303 6 - 1/8</b>	6	1/8	15,5	12
<b>1303 8 - 1/4</b>	8	1/4	19	14
<b>1303 10 - 3/8</b>	10	3/8	21,5	17
<b>1303 12 - 1/2</b>	12	1/2	24	19

**Fittings Mod. 1310...**

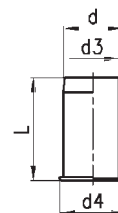
\* Biconical.



**DIMENSIONS**

Mod.	D	d1	d2	l	L
<b>1310 4</b>	4	7,8	3	1	8
<b>1310 6</b>	6	7,8	4,5	1	7
<b>1310 8</b>	8	10,8	7	1,5	9
<b>1310 10</b>	10	13,8	9	1,5	11,5
<b>1310 12</b>	12	16,8	11	2	13
<b>1310 12</b>	12	16,3	12	-	14 *

**Fittings Mod. 1320...**



**DIMENSIONS**

Mod.	d	d3	d4	L
<b>1320 4</b>	4	3	5	12
<b>1320 6</b>	6	5	7	13
<b>1320 8</b>	8	7	9	14
<b>1320 10</b>	10	9	11	16