

# 7

# FITTINGS

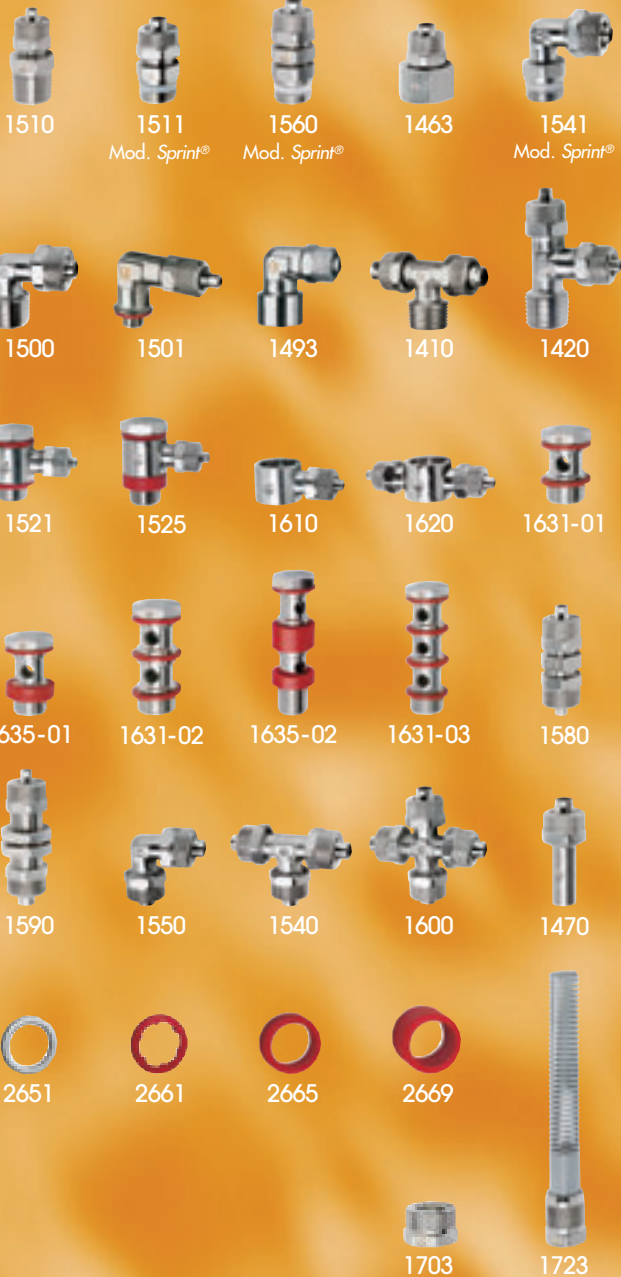
## Rapid fittings for plastic tubes

Tubes  $\varnothing$  5/3, 6/4, 8/6, 10/8, 12/10, 15/12,5  
 Connections M5, M6, M12x1, M12x1,25, G1/8, G1/4, G3/8, G1/2  
 R1/8, R1/4, R3/8, R1/2

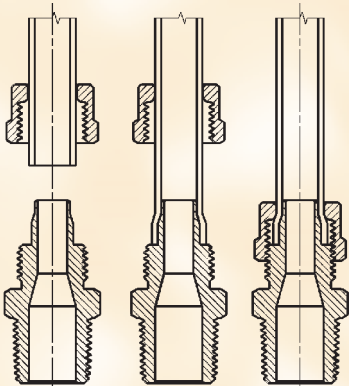
The rapid fittings come in 28 different versions and are easily fitted without the use of a spanner. They can also be used with rigid nylon tubes. A locking nut is provided and can be tightened both manually and with a spanner. The special shape of the guiding cone ensures that the tube can not be accidentally cut.



1431  
Mod. Sprint®

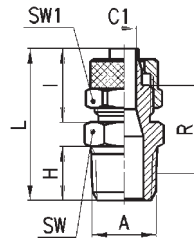


Fitting with connecting plastic



GENERAL DATA	
Material	body and nut brass OT58, nickel-plated sealing on thread: PTFE, Nylon
Threads	GAS, conical ISO 7 (BSPT) GAS, cylindrical ISO 228 (BSP) M5 - M6 NPT and metric (available on request)
Pressure	max 25 bar (depending on tubing)
Tube to connect	nylon polyethylene braided PVC rilson polyurethane
Diameters	from 5/3 ÷ 15/12.5 mm
Fluid	compressed air low-pressure fluids
Temperature	(see data for tubing used)

**Fittings Mod. 1510...**

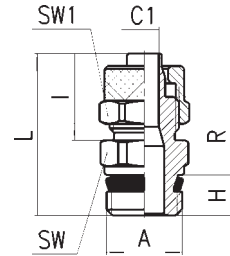


DIMENSIONS										
Mod.	TUBE	A	C1	H	I	L	R	SW	SW1	
1510 5/3 -1/8	5/3	R1/8	2	7,5	12,5	24,5	14,5	12	8	
1510 6/4 -1/8	6/4	R1/8	3	7,5	15	27	16	12	12	
1510 6/4 -1/4	6/4	R1/4	3	11	15	31	18,5	14	12	
1510 6/4 -3/8	6/4	R3/8	3	11,5	15	31,5	18,5	17	12	
1510 6/4 -1/2	6/4	R1/2	3	14	15	34,5	20	22	12	
1510 6/4 -M12x1,25	6/4	M12x1,25	3	10	15	30	18	14	12	
1510 8/6 -1/8	8/6	R1/8	5	7,5	15	27	16	14	14	
1510 8/6 -1/4	8/6	R1/4	5	11	15	31	18,5	14	14	
1510 8/6 -3/8	8/6	R3/8	5	11,5	15	31,5	18,5	17	14	
1510 8/6 -1/2	8/6	R1/2	5	14	15	34,5	20	22	14	
1510 10/8 -1/8	10/8	R1/8	6,5	7,5	16,5	28,5	16,5	14	16	
1510 10/8 -1/4	10/8	R1/4	6,5	11	16,5	32,5	19	14	16	
1510 10/8 -3/8	10/8	R3/8	6,5	11,5	16,5	33	19	17	16	
1510 10/8 -1/2	10/8	R1/2	6,5	14	16,5	36	20,5	22	16	
1510 12/10 -3/8	12/10	R3/8	8,5	11,5	18	34,5	19	17	19	
1510 12/10 -1/2	12/10	R1/2	8,5	14	18	37,5	20,5	22	19	
1510 15/12,5 -1/2	15/12,5	R1/2	11	14	20	39,5	21	22	22	

The company reserves the right to vary models and dimensions without notice.  
These products are designed for industrial applications and are not suitable for sale to the general public.

**Fittings Mod. 1511...**

Mod. *Sprint*<sup>®</sup>  
\* with O-Ring assembled.

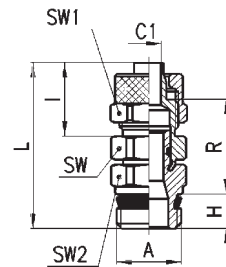


**DIMENSIONS**

Mod.	TUBE	A	C1	H	I	L	R	SW	SW1
1511 5/3 - M5	5/3	M5	2	3,5	12,5	20,5	10,5	9	8 *
1511 5/3 - M6	5/3	M6	2	4	12,5	21	10,5	9	8 *
1511 5/3 - 1/8	5/3	G1/8	2	5,5	12,5	23,8	11,8	12	8
1511 6/4 - M5	6/4	M5	3	3,5	13,5	21,5	10,5	9	9 *
1511 6/4 - M6	6/4	M6	3	4	13,5	22	10,5	9	9 *
1511 6/4 - 1/8	6/4	G1/8	3	5,5	15	26,3	13,3	12	12
1511 6/4 - 1/4	6/4	G1/4	3	7	15	28	13,5	14	12
1511 6/4 - 3/8	6/4	G3/8	3	8	15	29,3	13,8	19	12
1511 8/6 - 1/8	8/6	G1/8	5	5,5	15	26,3	13,3	12	14
1511 8/6 - 1/4	8/6	G1/4	5	7	15	28	13,5	14	14
1511 8/6 - 3/8	8/6	G3/8	5	8	15	29,3	13,8	19	14
1511 10/8 - 1/8	10/8	G1/8	6,5	5,5	16,5	27,8	13,8	14	16
1511 10/8 - 1/4	10/8	G1/4	6,5	7	16,5	29,5	14	14	16
1511 10/8 - 3/8	10/8	G3/8	6,5	8	16,5	30,8	14,3	19	16
1511 10/8 - 1/2	10/8	G1/2	6,5	9	16,5	32,5	15	22	16
1511 12/10 - 3/8	12/10	G3/8	8,5	8	18	32,3	14,3	19	19
1511 12/10 - 1/2	12/10	G1/2	8,5	9	18	34	15	22	19
1511 15/12,5 - 1/2	15/12,5	G1/2	11	9	20	36	15,5	22	22

**Fittings Mod. 1560...**

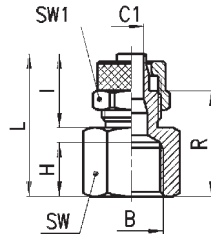
Male stud swivel *Sprint*<sup>®</sup>.



**DIMENSIONS**

Mod.	TUBE	A	C1	H	I	L	R	SW	SW1	SW2
1560 6/4 - 1/8	6/4	G1/8	3	5,5	15	31	18	12	12	12
1560 6/4 - 1/4	6/4	G1/4	3	7	15	32,5	18	12	12	14
1560 8/6 - 1/8	8/6	G1/8	5	5,5	15	32	19	14	14	12
1560 8/6 - 1/4	8/6	G1/4	5	7	15	33,5	19	14	14	14
1560 10/8 - 1/4	10/8	G1/4	6,5	7	16,5	34,5	19	14	16	14
1560 10/8 - 3/8	10/8	G3/8	6,5	8	16,5	36	19,5	14	16	19
1560 12/10 - 3/8	12/10	G3/8	6,5	8	18	38	20	17	19	19

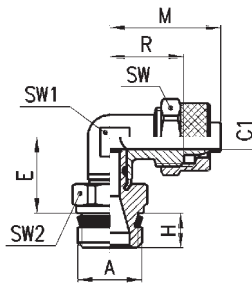
Fittings Mod. 1463...



DIMENSIONS										
Mod.	TUBE	B	C1	H	I	L	R	SW	SW1	
1463 5/3 - 1/8	5/3	G1/8	2	7,5	12,5	22,5	16	14	8	
1463 6/4 - 1/8	6/4	G1/8	3	7,5	15	25	17,5	14	12	
1463 6/4 - 1/4	6/4	G1/4	3	11	15	29	21,5	17	12	
1463 6/4 - 3/8	6/4	G3/8	3	11,5	15	29,5	22	22	12	
1463 8/6 - 1/8	8/6	G1/8	5	7,5	15	25	17,5	14	14	
1463 8/6 - 1/4	8/6	G1/4	5	11	15	29	21,5	17	14	
1463 8/6 - 3/8	8/6	G3/8	5	11,5	15	29,5	22	22	14	
1463 10/8 - 1/8	10/8	G1/8	6,5	7,5	16,5	26,5	18	14	16	
1463 10/8 - 1/4	10/8	G1/4	6,5	11	16,5	30,5	22	17	16	
1463 10/8 - 3/8	10/8	G3/8	6,5	11,5	16,5	31	22,5	22	16	
1463 10/8 - 1/2	10/8	G1/2	6,5	15	16,5	34,5	26	27	16	
1463 12/10 - 3/8	12/10	G3/8	8,5	11,5	18	32,5	22,5	22	19	

Fittings Mod. 1541...

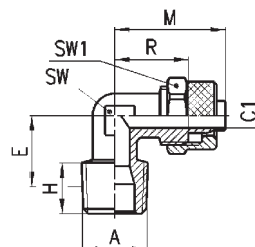
Swivel elbow Mod. *Sprint*®.



DIMENSIONS											
Mod.	TUBE	A	C1	E	H	M	R	SW	SW1	SW2	
1541 6/4 - 1/8	6/4	G1/8	3	15	5,5	22,5	15	12	10	12	
1541 6/4 - 1/4	6/4	G1/4	3	15	7	22,5	15	12	10	14	
1541 8/6 - 1/8	8/6	G1/8	5	15	5,5	22,5	15	14	10	12	
1541 8/6 - 1/4	8/6	G1/4	5	15	7	22,5	15	14	10	14	
1541 10/8 - 1/4	10/8	G1/4	6,5	16	7	25,5	17	16	12	14	

The company reserves the right to vary models and dimensions without notice. These products are designed for industrial applications and are not suitable for sale to the general public.

Fittings Mod. 1500...

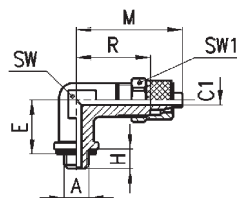


DIMENSIONS

Mod.	TUBE	A	C1	E	H	M	R	SW	SW1
1500 5/3 - 1/8	5/3	R1/8	2	13,5	7,5	21,5	15	8	8
1500 6/4 - 1/8	6/4	R1/8	3	13,5	7,5	22,5	15	8	12
1500 6/4 - 1/4	6/4	R1/4	3	15	11	22,5	15	10	12
1500 6/4 - 3/8	6/4	R3/8	3	16,5	11,5	23,5	16	12	12
1500 6/4 - M12x1,25	6/4	M12x1,25	3	14	10	22,5	15	10	12
1500 8/6 - 1/8	8/6	R1/8	5	13,5	7,5	22,5	15	10	14
1500 8/6 - 1/4	8/6	R1/4	5	15	11	22,5	15	10	14
1500 8/6 - 3/8	8/6	R3/8	5	16,5	11,5	24	16	12	14
1500 8/6 - 1/2	8/6	R1/2	5	21	14	27	19	16	14
1500 10/8 - 1/8	10/8	R1/8	6,5	15	7,5	25,5	17	12	16
1500 10/8 - 1/4	10/8	R1/4	6,5	17	11	25,5	17	12	16
1500 10/8 - 3/8	10/8	R3/8	6,5	16,5	11,5	25,5	17	12	16
1500 10/8 - 1/2	10/8	R1/2	6,5	21	14	28,5	20	16	16
1500 12/10 - 3/8	12/10	R3/8	8,5	19	11,5	30	20	14	19
1500 12/10 - 1/2	12/10	R1/2	8,5	21	14	30,5	20,5	16	19
1500 15/12,5 - 1/2	15/12,5	R1/2	11	21	14	34	22,5	16	22

Fittings Mod. 1501 5/3-M5

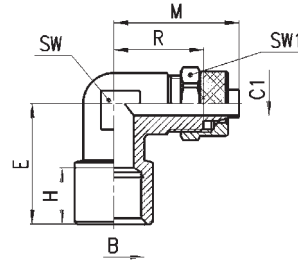
With Mod. 2661 assembled.



DIMENSIONS

Mod.	TUBE	A	C1	E	H	M	R	SW	SW1
1501 5/3-M5	5/3	M5	2	11	4	21,5	15	8	8

Fittings Mod. 1493...

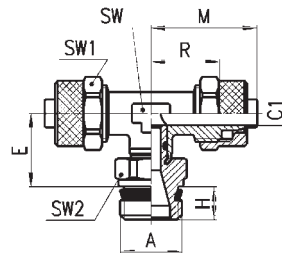


DIMENSIONS

Mod.	TUBE	B	C1	E	H	M	R	SW	SW1
1493 6/4 - 1/8	6/4	G1/8	3	18,5	7,5	22,5	15	10	12
1493 6/4 - 1/4	6/4	G1/4	3	25,5	11	26	18,5	14	12
1493 8/6 - 1/8	8/6	G1/8	5	18,5	7,5	22,5	15	10	14
1493 8/6 - 1/4	8/6	G1/4	5	25,5	11	26	19	14	14
1493 10/8 - 1/4	10/8	G1/4	6,5	25,5	11	27,5	18	14	16
1493 12/10 - 3/8	12/10	G3/8	8,5	28	11,5	30,5	19,5	16	19

Fittings Mod. 1431...

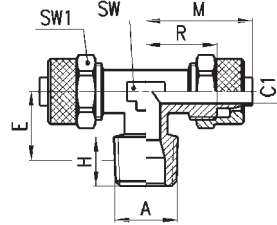
Swivel branch tee *Sprint*<sup>®</sup>.



DIMENSIONS

Mod.	TUBE	A	C1	E	H	M	R	SW	SW1	SW2
1431 6/4 - 1/8	6/4	G1/8	3	15	5,5	22,5	15	10	12	12
1431 6/4 - 1/4	6/4	G1/4	3	15	7	22,5	15	10	12	14
1431 8/6 - 1/8	8/6	G1/8	5	15	5,5	22,5	15	10	14	12
1431 8/6 - 1/4	8/6	G1/4	5	15	7	22,5	15	10	14	14
1431 10/8 - 1/4	10/8	G1/4	6,5	16	7	25,5	17	12	16	14

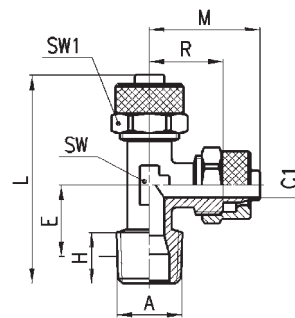
Fittings Mod. 1410...



DIMENSIONS

Mod.	TUBE	A	C1	E	H	M	R	SW	SW1
1410 5/3 -1/8	5/3	R1/8	2	13,5	7,5	21,5	15	8	8
1410 6/4 -1/8	6/4	R1/8	3	13,5	7,5	22,5	15	8	12
1410 6/4 -1/4	6/4	R1/4	3	15	11	22,5	15	10	12
1410 8/6 -1/8	8/6	R1/8	5	13,5	7,5	22,5	15	10	14
1410 8/6 -1/4	8/6	R1/4	5	15	11	22,5	15	10	14
1410 10/8 -1/8	10/8	R1/8	6,5	15	7,5	25,5	17	12	16
1410 10/8 -1/4	10/8	R1/4	6,5	17	11	25,5	17	12	16
1410 10/8 -3/8	10/8	R3/8	6,5	16,5	11,5	25,5	17	12	16
1410 10/8 -1/2	10/8	R1/2	6,5	21	14	28,5	20	16	16
1410 12/10 -3/8	12/10	R3/8	8,5	19	11,5	30	20	14	19
1410 12/10 -1/2	12/10	R1/2	8,5	21	14	30,5	20,5	16	19
1410 15/12,5 -1/2	15/12,5	R1/2	11	21	14	34	22,5	16	22

Fittings Mod. 1420...

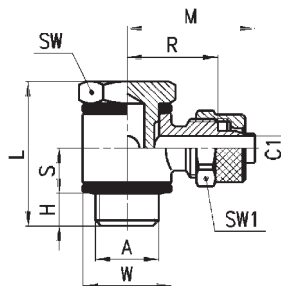


DIMENSIONS

Mod.	TUBE	A	C1	E	H	L	M	R	SW	SW1
1420 5/3 -1/8	5/3	R1/8	2	13,5	7,5	38,5	21,5	15	8	8
1420 6/4 -1/8	6/4	R1/8	3	13,5	7,5	39,5	22,5	15	8	12
1420 6/4 -1/4	6/4	R1/4	3	15	11	42,5	22,5	15	10	12
1420 8/6 -1/8	8/6	R1/8	5	13,5	7,5	39,5	22,5	15	10	14
1420 8/6 -1/4	8/6	R1/4	5	15	11	42,5	22,5	15	10	14
1420 10/8-1/8	10/8	R1/8	6,5	15	7,5	43,5	25,5	17	12	16
1420 10/8-1/4	10/8	R1/4	6,5	17	11	47	25,5	17	12	16

**Fittings Mod. 1521...**

Only on request

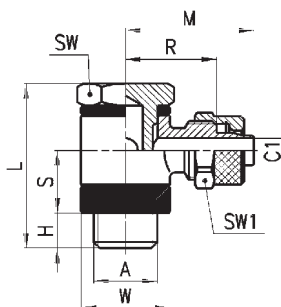


**DIMENSIONS**

Mod.	TUBE	A	C1	H	L	S	M	R	W	SW	SW1
1521 5/3 - M5	5/3	M5	2	3	18	4,5	17	10,5	□9	8	8
1521 5/3 - 1/8	5/3	G1/8	2	6	27	8,5	22,5	16	∅14	14	8
1521 6/4 - M5	6/4	M5	3	3	18	4,5	18	10,5	□9	8	9
1521 6/4 - 1/8	6/4	G1/8	3	6	27	8,5	24	16,5	∅14	14	12
1521 6/4 - 1/4	6/4	G1/4	3	8	29,5	8,5	26	18,5	∅18	17	12
1521 6/4 - 3/8	6/4	G3/8	3	8	30	8,5	28	20,5	∅21	19	12
1521 8/6 - 1/8	8/6	G1/8	5	6	27	8,5	24	16,5	∅14	14	14
1521 8/6 - 1/4	8/6	G1/4	5	8	29,5	8,5	26	18,5	∅18	17	14
1521 8/6 - 3/8	8/6	G3/8	5	8	30	8,5	28	20,5	∅21	19	14
1521 8/6 - 1/2	8/6	G1/2	5	9	31	8,5	30	22,5	∅26	27	14

**Fittings Mod. 1525...**

Only on request



**DIMENSIONS**

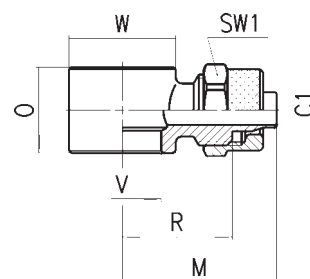
Mod.	TUBE	A	C1	H	L	S	M	R	W	SW	SW1
1525 6/4 - 1/8	6/4	G1/8	3	6	31	12,5	24	16,5	∅14	14	12
1525 6/4 - 1/4	6/4	G1/4	3	8	33,5	12,5	26	18,5	∅18	17	12
1525 6/4 - 3/8	6/4	G3/8	3	8	34	12,5	28	20,5	∅21	19	12
1525 8/6 - 1/8	8/6	G1/8	5	6	31	12,5	24	16,5	∅14	14	14
1525 8/6 - 1/4	8/6	G1/4	5	8	33,5	12,5	26	18,5	∅18	17	14
1525 8/6 - 3/8	8/6	G3/8	5	8	34	12,5	28	20,5	∅21	19	14
1525 10/8 - 1/8	10/8	G1/8	6,5	6	31	12,5	25	16,5	∅14	14	16
1525 10/8 - 1/4	10/8	G1/4	6,5	8	33,5	12,5	27	18,5	∅18	17	16
1525 10/8 - 3/8	10/8	G3/8	6,5	8	34	12,5	29,5	21	∅21	19	16
1525 10/8 - 1/2	10/8	G1/2	6,5	9	35	12,5	32	23,5	∅26	27	16
1525 12/10 - 3/8	12/10	G3/8	8	8	34	12,5	31,5	21	∅21	19	19
1525 12/10 - 1/2	12/10	G1/2	8,5	9	35	12,5	33,5	23,5	∅26	27	19
1525 15/12,5 - 1/2	15/12,5	G1/2	11	9	35	12,5	36,5	25	∅26	27	22

**Fittings Mod. 1610...**

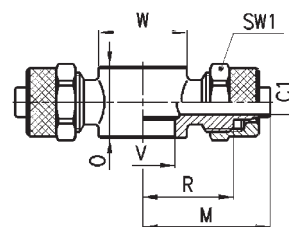
- \* Assembly required with Mod. 1635
- assembly possible only with Mod. SCU, SVU, SCO...M5.

**DIMENSIONS**

Mod.	TUBE	C1	M	O	R	V	W	SW1
1610 5/3 - M5	5/3	2	17	9	10,5	5,1	□9	8
1610 5/3 - M6	5/3	2	17	9	10,5	5,1	□9	8 •
1610 5/3 - 1/8	5/3	2	22,5	14,5	16	9,8	Ø14	8
1610 6/4 - M5	6/4	3	18	9	10,5	5,1	□9	9
1610 6/4 - M6	6/4	2	18	9	10,5	5,1	□9	9 •
1610 6/4 - 1/8	6/4	3	24	14,5	16,5	9,8	Ø14	12
1610 6/4 - 1/4	6/4	3	26	14,5	18,5	13,2	Ø18	12
1610 6/4 - 3/8	6/48	3	28	14,5	20,5	16,7	Ø21	12
1610 8/6 - 1/8	8/6	5	24	14,5	16,5	9,8	Ø14	14
1610 8/6 - 1/4	8/6	5	26	14,5	18,5	13,2	Ø18	14
1610 8/6 - 3/8	8/6	5	28	14,5	20,5	16,7	Ø21	14
1610 10/8 - 1/8	10/8	6,5	25	14,5	16,5	9,8	Ø14	16 *
1610 10/8 - 1/4	10/8	6,5	27	14,5	18,5	13,2	Ø18	16 *
1610 10/8 - 3/8	10/8	6,5	29,5	14,5	21	16,7	Ø21	16 *
1610 10/8 - 1/2	10/8	6,5	32	14,5	23,5	21	Ø26	16 *
1610 12/10 - 3/8	12/10	8	31,5	14,5	21,5	16,7	Ø21	19 *
1610 12/10 - 1/2	12/10	8,5	33,5	14,5	23,5	21	Ø26	19 *
1610 15/12,5 - 1/2	15/12,5	11	36,5	14,5	25	21	Ø26	22 *



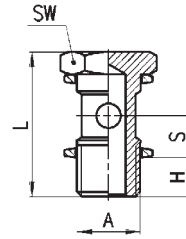
**Fittings Mod. 1620...**



**DIMENSIONS**

Mod.	TUBE	C1	M	O	R	V	W	SW1
1620 6/4 - M5	6/4	3	18	9	10,5	5,1	□9	9
1620 6/4 - 1/8	6/4	3	24	14,5	16,5	9,8	Ø14	12
1620 6/4 - 1/4	6/4	3	26	14,5	18,5	13,2	Ø18	12
1620 8/6 - 1/8	8/6	5	24	14,5	16,5	9,8	Ø14	14
1620 8/6 - 1/4	8/6	5	26	14,5	18,5	13,2	Ø18	14

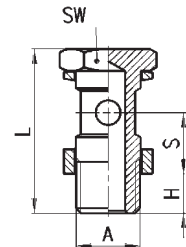
**Fittings Mod. 1631 01...**



**DIMENSIONS**

Mod.	A	H	L	S	SW
<b>1631 01- M5</b>	M5	4	18	5,5	8
<b>1631 01- 1/8</b>	G1/8	6	27	8,5	14
<b>1631 01- 1/4</b>	G1/4	8	29,5	8,5	17
<b>1631 01- 3/8</b>	G3/8	8	30	8,5	19
<b>1631 01- 1/2</b>	G1/2	9	31	8,5	27

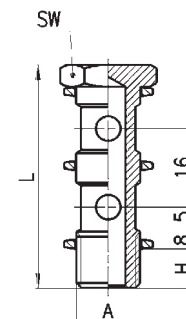
**Fittings Mod. 1635 01...**



**DIMENSIONS**

Mod.	A	H	L	S	SW
<b>1635 01- 1/8</b>	G1/8	6	31	12,5	14
<b>1635 01- 1/4</b>	G1/4	8	33,5	12,5	17
<b>1635 01- 3/8</b>	G3/8	8	34	12,5	19
<b>1635 01- 1/2</b>	G1/2	9	35	12,5	27
<b>1635 01- M12x1,25</b>	M12x1,25	8	33,5	12,5	17 *
<b>1635 01- M12x1,5</b>	M12x1,5	8	33,5	12,5	17 *

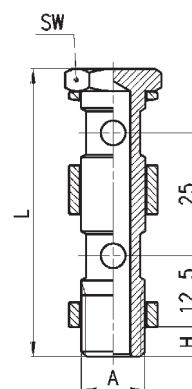
**Fittings Mod. 1631 02...**



**DIMENSIONS**

Mod.	A	H	L	SW
<b>1631 02- 1/8</b>	G1/8	6	43	14
<b>1631 02- 1/4</b>	G1/4	8	45,5	17
<b>1631 02- 3/8</b>	G3/8	8	46	19

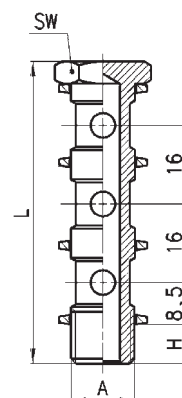
Fittings Mod. 1635 02...



DIMENSIONS

Mod.	A	H	L	SW
<b>1635 02-1/8</b>	G1/8	6	56	14
<b>1635 02-1/4</b>	G1/4	8	58,5	17
<b>1635 02-3/8</b>	G3/8	8	59	19
<b>1635 02-1/2</b>	G1/2	9	60	27

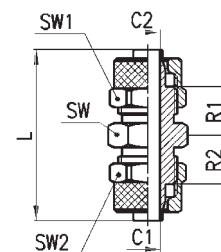
Fittings Mod. 1631 03...



DIMENSIONS

Mod.	A	H	L	SW
<b>1631 03-1/8</b>	G1/8	6	59	14
<b>1631 03-1/4</b>	G1/4	8	61,5	17
<b>1631 03-3/8</b>	G3/8	8	62	19

Fittings Mod. 1580...



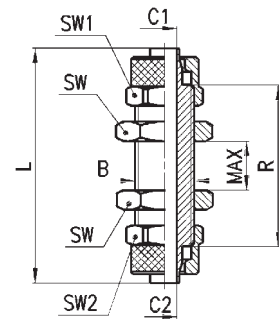
DIMENSIONS

Mod.	TUBE	C1	C2	L	R1	R2	SW	SW1	SW2
<b>1580 5/3</b>	5/3	2	2	28,5	7,5	7,5	8	8	8
<b>1580 6/4</b>	6/4	3	3	34,5	10	10	12	12	12
<b>1580 8/6-6/4</b>	8/6-6/4	5	3	35	10	10	14	12	14
<b>1580 8/6</b>	8/6	5	5	35	10	10	14	14	14
<b>1580 10/8-6/4</b>	10/8-6/4	6,5	3	36,5	10,5	10	14	12	16
<b>1580 10/8</b>	10/8	6,5	6,5	38	10,5	10,5	14	16	16
<b>1580 12/10</b>	12/10	8,5	8,5	41	10,5	10,5	17	19	19
<b>1580 15/12,5</b>	15/12,5	11	11	45	11	11	22	22	22

**Fittings Mod. 1590...**

**DIMENSIONS**

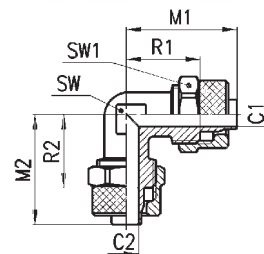
Mod.	TUBE	B	C1	C2	L	R	MAX	SW	SW1	SW2
1590 5/3	5/3	M7x0,75	2	2	40	27	9	9	8	8
1590 6/4-5/3	6/4-5/3	M10x1	3	2	48	34	14	14	12	12
1590 6/4	6/4	M10x1	3	3	48	33	14	14	12	12
1590 8/6-6/4	8/6-6/4	M12x1	5	3	48	33	12	17	14	14
1590 8/6	8/6	M12x1	5	5	48	33	12	17	14	14
1590 10/8	10/8	M14x1	6,5	6,5	48	31	10	17	16	16
1590 12/10	12/10	M16x1	8,5	8,5	53	33	10	19	19	19



**Fittings Mod. 1550...**

**DIMENSIONS**

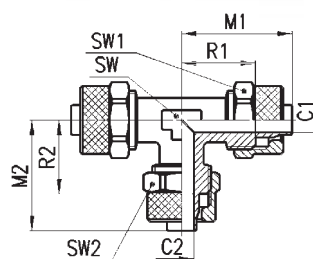
Mod.	TUBE	C1	C2	M1	M2	R1	R2	SW	SW1
1550 6/4	6/4	3	3	22,5	22,5	15	15	8	12
1550 8/6	8/6	5	5	22,5	22,5	15	15	10	14
1550 10/8	10/8	6,5	6,5	25,5	25,5	17	17	12	16
1550 12/10	12/10	8,5	8,5	30	30	20	20	14	19
1550 15/12,5	15/12,5	11	11	34	34	22,5	22,5	16	22



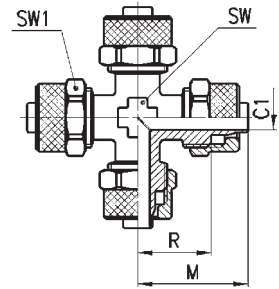
**Fittings Mod. 1540...**

**DIMENSIONS**

Mod.	TUBE	C1	C2	M1	M2	R1	R2	SW	SW1	SW2
1540 5/3	5/3	2	2	21,5	21,5	15	15	8	8	8
1540 6/4	6/4	3	3	22,5	22,5	15	15	8	12	12
1540 8/6-6/4	8/6-6/4	5	3	22,5	22,5	15	15	10	14	12
1540 8/6	8/6	5	5	22,5	22,5	15	15	10	14	14
1540 10/8-6/4	10/8-6/4	6,5	3	25,5	23,5	17	16,5	12	16	12
1540 10/8-8/6	10/8-8/6	6,5	5	25,5	24	17	16,5	12	16	14
1540 10/8	10/8	6,5	6,5	25,5	25,5	17	17	12	16	16
1540 12/10	12/10	8,5	8,5	30	30	20	20	14	19	19
1540 15/12,5	15/12,5	11	11	34	34	22,5	22,5	16	22	22



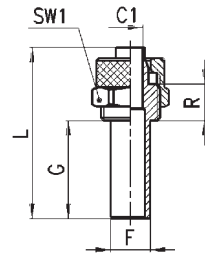
Fittings Mod. 1600...



DIMENSIONS

Mod.	TUBE	C1	M	R	SW	SW1
<b>1600 6/4</b>	6/4	3	22,5	15	8	12
<b>1600 8/6</b>	8/6	5	22,5	15	10	14

Fittings Mod. 1470...



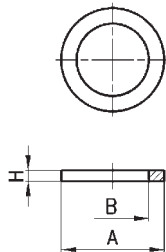
DIMENSIONS

Mod.	TUBE	F	C1	G	L	R	SW1
<b>1470 6/4</b>	6/4	6	3	20	35	7,5	12
<b>1470 8/6</b>	8/6	8	5	20	35	7,5	14

Fittings Mod. 2651...



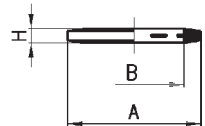
Aluminium



DIMENSIONS

Mod.	A	B	H
<b>2651 1/8</b>	14	9,8	1,5
<b>2651 1/4</b>	18	13,2	1,5
<b>2651 3/8</b>	22	16,7	1,5
<b>2651 1/2</b>	26	20,9	1,5

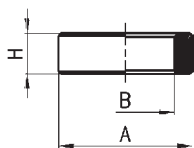
Fittings Mod. 2661...



DIMENSIONS

Mod.	A	B	H
<b>2661 M3</b>	4,9	2,8	0,7
<b>2661 M5</b>	8	5,2	1
<b>2661 M6</b>	9	6,2	1
<b>2661 1/8</b>	14	10,2	1,9
<b>2661 1/4</b>	18	13,5	1,9
<b>2661 3/8</b>	21	16,5	2,1
<b>2661 1/2</b>	26	21,2	1,9

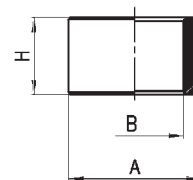
**Fittings Mod. 2665...**



**DIMENSIONS**

Mod.	A	B	H
<b>2665 1/8</b>	14	9,8	5
<b>2665 1/4</b>	18	13,2	5
<b>2665 3/8</b>	21	16,8	5
<b>2665 1/2</b>	26	21,1	5

**Fittings Mod. 2669...**



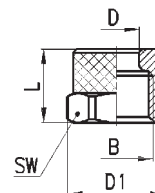
**DIMENSIONS**

Mod.	A	B	H
<b>2669 1/8</b>	14	9,8	10
<b>2669 1/4</b>	18	13,2	10
<b>2669 3/8</b>	21	16,8	10
<b>2669 1/2</b>	26	21,1	10

**Fittings Mod. 1703...**

**DIMENSIONS**

Mod.	TUBE	B	D	D1	L	SW1
<b>1703 5/3 - M7x0.75</b>	5/3	M7x0,75	5,10	8,8	8,5	8
<b>1703 6/4 - M8x0.75</b>	6/4	M8x0,75	6,10	9,8	8,5	9
<b>1703 6/4 - M10x1</b>	6/4	M10x1	6,10	13,3	10	12
<b>1703 8/6 - M12x1</b>	8/6	M12x1	8,15	15,5	10	14
<b>1703 10/8 - M14x1</b>	10/8	M14x1	10,15	17,5	13	16
<b>1703 12/10 - M16x1</b>	12/10	M16x1	12,2	21	13,5	19
<b>1703 15/12,5 - M20x1</b>	15/12,5	M20x1	15,2	24,5	16	22



**Fittings Mod. 1723...**

**DIMENSIONS**

Mod.	TUBE	B	F	D	D1	G	L	SW
<b>1723 6/4 - M10x1</b>	6/4	M10x1	8,9	6,10	13,3	18	90,5	12
<b>1723 8/6 - M12x1</b>	8/6	M12x1	10,9	8,15	15,5	18	94,5	14
<b>1723 10/8 - M14x1</b>	10/8	M14x1	12,5	10,15	17,5	22	96,5	16
<b>1723 12/10 - M16x1</b>	12/10	M16x1	15,5	12,2	21	23,5	108	19
<b>1723 15/12,5 - M20x1</b>	15/12,5	M20x1	18,5	15,2	24,5	28	120	22

