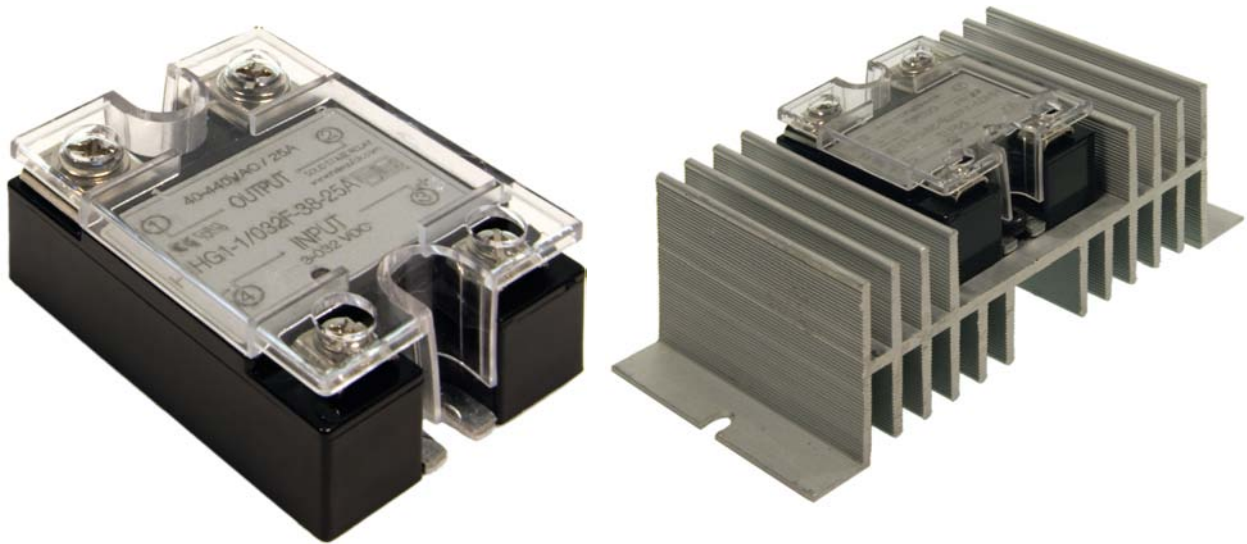


Single Phase Solid State Relay HHG1-1 (input voltage VDC)

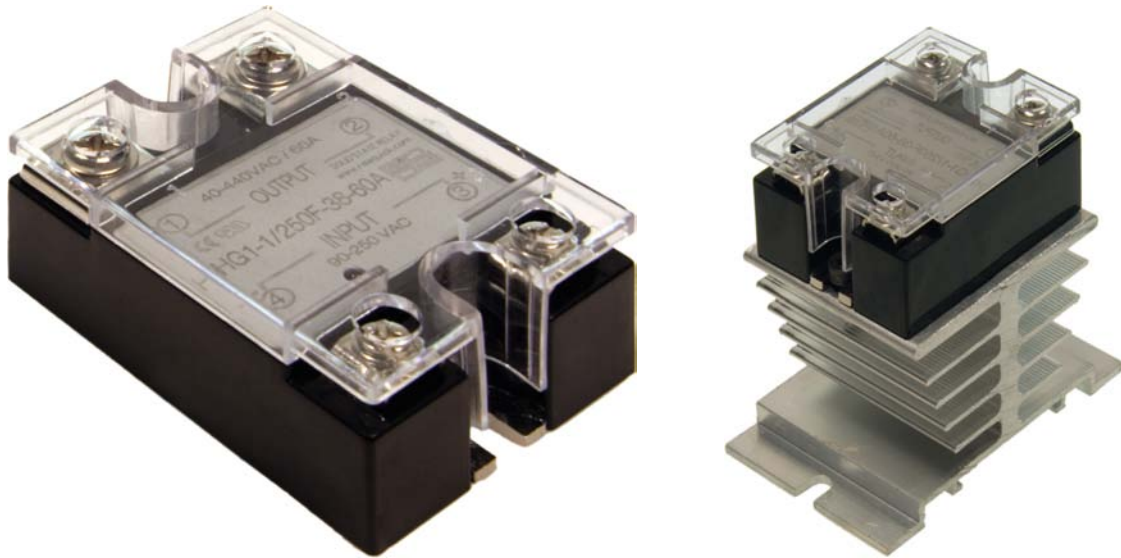


Input circuit		
LED indicate	Yes	
Control voltage range	3-32VDC	
Control current range	6-35mA	
Min. turn-on voltage	3VDC	
Min. turn-off voltage	1VDC	
Min. input impedance	1500(Ω)	
Output circuit		
	zero cross switching	
Max. load current	25, 60, 80 (A)	
Load voltage range	40-440VAC (50-60Hz)	
Max. non-repetitive peak voltage	660VAC	
Max. non-repetitive peak current (10 ms)	165 A	
Max. off-state leakage current	\leq 10mA	
Max. on-state voltage drop	<1,6VAC	
Min. load current	0.1 A	
General data		
Max. turn-on time	8,3 - 10ms	
Min. insulation resistance (between input and output, input / output and cover)	500M Ω	
Insulation dielectric strength	\geq 2500VAC	
Dimensions (L x W x H)	57 x 44 x 27 (mm)	
Operating temperature	-25 +70 $^{\circ}$ C	
Radiators (above 10A load max. mount radiator)		
Reference	Output current	Dimensions L x W x H (mm)
HH-060	\leq 25A	80 x 50 x 50
HH-061	\leq 60A	127 x 72 x 50
HH-062	\leq 80A	127 x 115 x 50

Ordering part number: HHG1-1/032F - 38 - (_) Z
 (_):Max. load current (A) 25, 60, 80



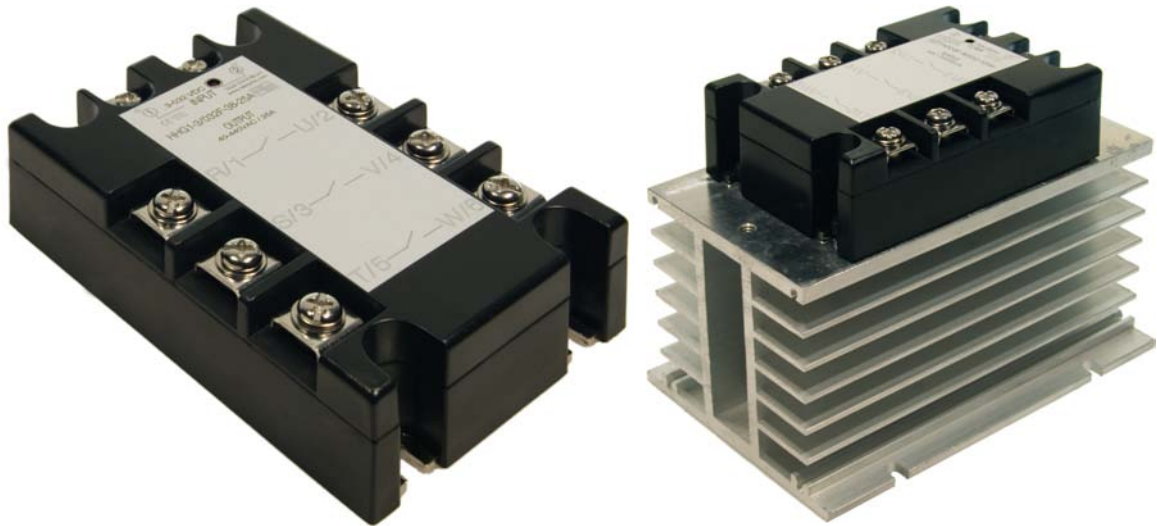
Single Phase Solid State Relay HHG1-1 (input voltage VAC)



Input circuit		
LED indicate	Yes	
Control voltage range	90 - 250VAC	
Control current range	5-35mA	
Min. turn-on voltage	90VAC	
Min. turn-off voltage	10VAC	
Min. input impedance	1500(Ω)	
Output circuit		
	zero cross switching	
Max. load current	25, 60, 80 (A)	
Load voltage range	40-440VAC (50-60Hz)	
Max. non-repetitive peak voltage	660VAC	
Max. non-repetitive peak current (10 ms)	165 A	
Max. off-state leakage current	≤ 10 mA	
Max. on-state voltage drop	<1,6VAC	
Min. load current	0.1 A	
General data		
Max. turn-on time	8,3 - 10ms	
Min. insulation resistance (between input and output, input / output and cover)	500M Ω	
Insulation dielectric strength	≥ 2500 VAC	
Dimensions (L x W x H)	57 x 44 x 27 (mm)	
Operating temperature	-25 +70 $^{\circ}$ C	
Radiators (above 10A load max. mount radiator)		
Reference	Output current	Dimensions L x W x H (mm)
HH-060	≤ 25 A	80 x 50 x 50
HH-061	≤ 60 A	127 x 72 x 50
HH-062	≤ 80 A	127 x 115 x 50

Ordering part number: HHG1-1/250F - 38 - () Z
 (): Max. load current (A) 25, 60, 80

Three Phases Solid State Relay HHG1-3 (input voltage VCD)



Input circuit

LED indicate	YES
Control voltage range	3 - 32 VDC
Control current range	12 - 30mA
Min. turn-on voltage	3VDC
Min. turn-off voltage	1VDC
Min. input impedance	1500(Ω)
Opposite voltage	32VDC

Output circuit

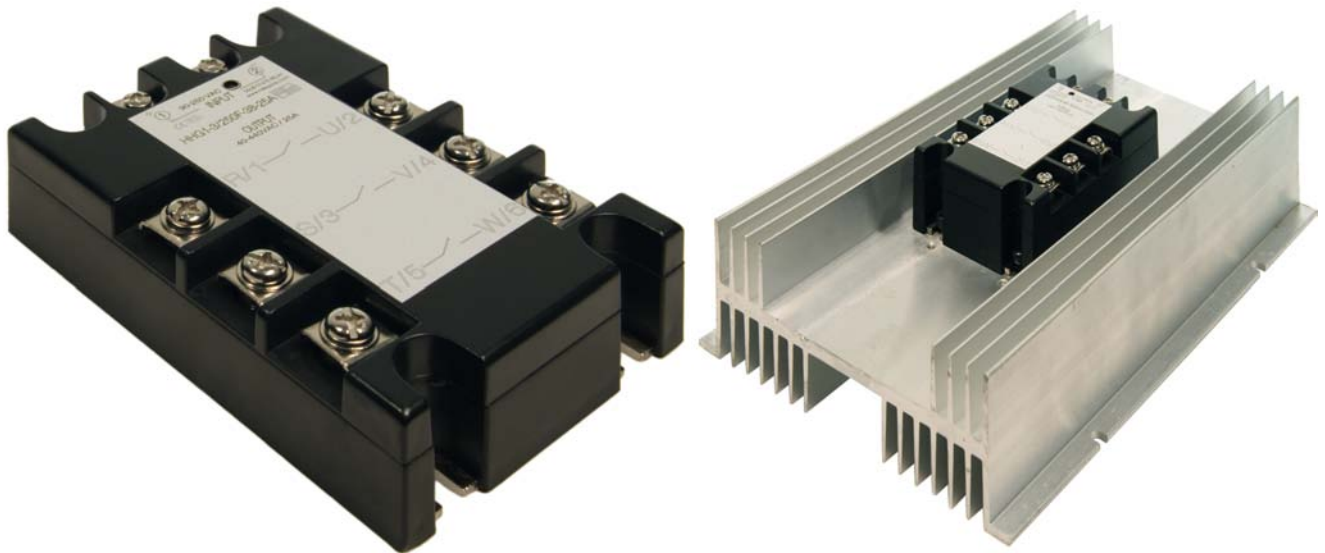
Max. load current	25, 60, 80, 120 (A)
Load voltage range	40-440VAC
Max. non-repetitive peak voltage	660VAC
Max. non-repetitive peak current	165 A
Max. off-state leakage current	≤ 10mA
Max. on-state voltage drop	<1,6VAC
Min. load current	0.1 A
Operating frequency range	47 - 63 Hz

General data

Max. turn-on time	10ms
Max. turn-off time	10ms
Min. insulation resistance (between input and output, input / output and cover)	500MΩ
Insulation dielectric strength	≥ 2500VAC
Max. capacitance (between input and output)	10pF
Dimensions (L x W x H)	106 x 75 x 32 (mm)
Weight	370gr
Storage temperature	-25 +100°C
Operating temperature	-25 +70°C

Ordering part number: HHG1-3/032F - 38 - (_) Z
 (_): Max. load current (A) 25, 60, 80, 120

Three Phases Solid State Relay HHG1-3 (input circuit VAC)



Input circuit

LED indicate	Yes
Control voltage range	90-250VAC
Control current range	12-30mA
Min. turn-on voltage	90VAC
Min. turn-off voltage	30VAC
Min. input impedance	600(Ω)

Output circuit

Max. load current	25, 60, 80 (A)
Load voltage range	40-440VAC
Max. non-repetitive peak voltage	660VAC
Max. non-repetitive peak current	165 A
Max. off-state leakage current	≤ 10 mA
Max. on-state voltage drop	<1,6VAC
Min. load current	0.1 A
Operating frequency range	50 - 60 Hz

General data

Max. turn-on time	10ms
Max. turn-off time	10ms
Min. insulation resistance (between input and output, input / output and cover)	500M Ω
Insulation dielectric strength	≥ 2500 VAC
Max. capacitance (between input and output)	10pF
Dimensions (L x W x H)	106 x 75 x 32 (mm)
Weight	370gr
Storage temperature	-25 +100°C
Operating temperature	-25 +70°C

Ordering part number: HHG1-3/250F - 38 - (_) Z
 (_): Max. load current (A) 25, 60, 80, 120

Minuature Solid State Relays HHG1-1



Input circuit

Control voltage range	3-32VDC
Control current range	6-35mA
Min. turn-on voltage	3VDC
Min. turn-off voltage	1VDC
Min. input impedance	1500(Ω)
Opposite voltage	32VDC

Output circuit

Max. load current	3, 4 (A)
Load voltage range	40-440VAC
Max. non-repetitive peak voltage	660VAC
Max. non-repetitive peak current	7A
Max. off-state leakage current	≤ 10mA
Max. on-state voltage drop	<1,6VAC
Min. load current	0.1 A
Operating frequency range	50 – 60 Hz

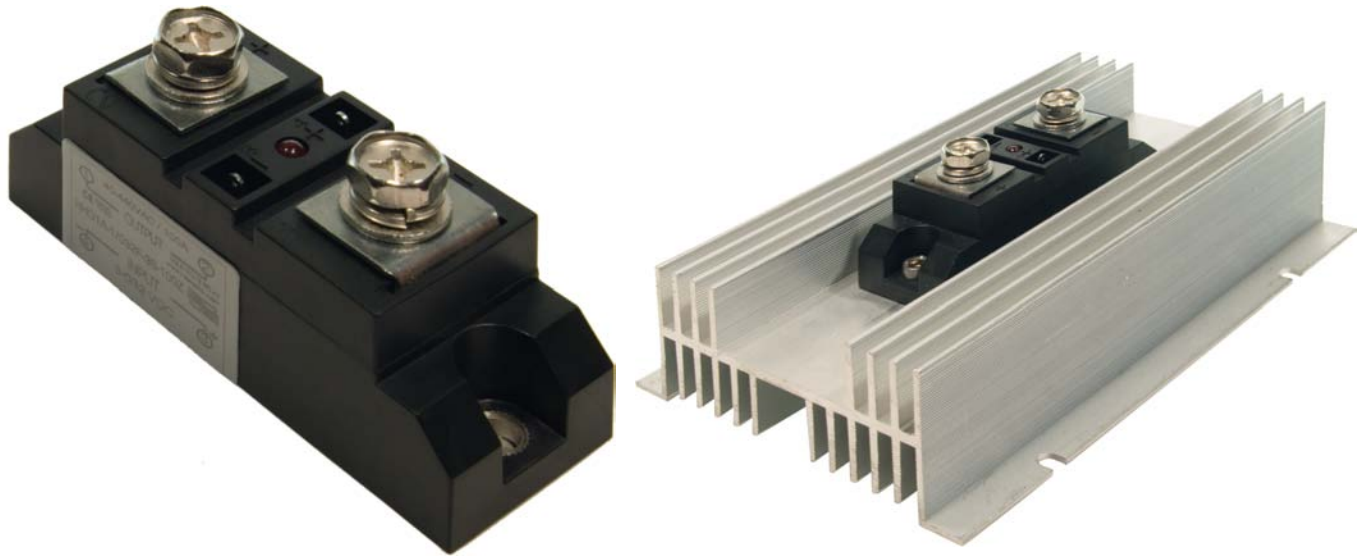
General data

Max. turn-on time	10ms
Max. turn-off time	10ms
Min. insulation resistance (between input and output, input / output and cover)	500MΩ
Insulation dielectric strength	≥1500VAC
Max. capacitance (between input and output)	10pF
Dimensions (L x W x H)	44 x 20 x 11 (mm)
Weight	22gr
Storage temperature	-25 +100°C
Operating temperature	-25 +70°C

Ordering part number: HHG1-1/032F - 38 - () Z
 (): Max. load current (A) 3, 4



Industrial Solid State Relays HHG1A-1

**Input circuit**

LED indicate	Yes
Control voltage range	3-32VDC
Control current range	6-35mA
Min. turn-on voltage	3VDC
Min. turn-off voltage	1VDC
Min. input impedance	1500(Ω)

Output circuit

zero cross switching

Max. load current	100, 150, 250 (A)
Load voltage range	40-440VAC (50-60Hz)
Max. non-repetitive peak voltage	660VAC
Max. non-repetitive peak current (10 ms)	800 A
Max. off-state leakage current	≤ 10 mA
Max. on-state voltage drop	<1,8VAC
Min. load current	0.1 A

General data

Max. turn-on time	8,3 - 10ms
Min. insulation resistance (between input and output, input / output and cover)	500M Ω
Insulation dielectric strength	≥ 2500 VAC
Dimensions (L x W x H)	94 x 34 x 43 (mm)
Operating temperature	-25 +70°C

Radiators (above 10A load max. mount radiator)

Reference	Output current	Dimensions L x W x H (mm)
HH-063	≤ 120 A	180 x 150 x 48
HH-038	≤ 100 A	150 x 125 x 135
HH-039	≤ 200 A	200 x 125 x 135

Ordering part number: HHG1A-1/032F - 38 - (_) Z
 (_):Max. load current (A) 100, 150, 250



About Relequick

Relequick is a company dedicated to produce and commercialise high quality industrial electrical and electronic components for industrial automation, mainly electromechanical and solid state relays, connection sockets, automation control modules and accessories. With our high quality to satisfy our customer necessities.

Innovation is the basis of Relequick culture. Innovating not only in products also in our processes , developing a high quality production level, giving rise to a versatile products range, innovated specific applications in the industrial market.

Solid State Relays List

Single Phase Solid State Relay

- . HHG1-1 (input voltage VDC)
- . HHG1-1 (input voltage VAC)

Three Phases Solid State Relay

- . HHG1-3 (input voltage VDC)
- . HHG1-3 (input circuit VCA)

Miniature Solid State Relay HHG1-1

Industrial Solid State Relay HHG1A-1